



JUNE 13, 2021 FAMILY MEETING
RICHLAND CREEK COMMUNITY CHURCH
PHASE 0 REALIGNMENT

OPERATIONALLY EFFECTIVE MAY 25, 2021

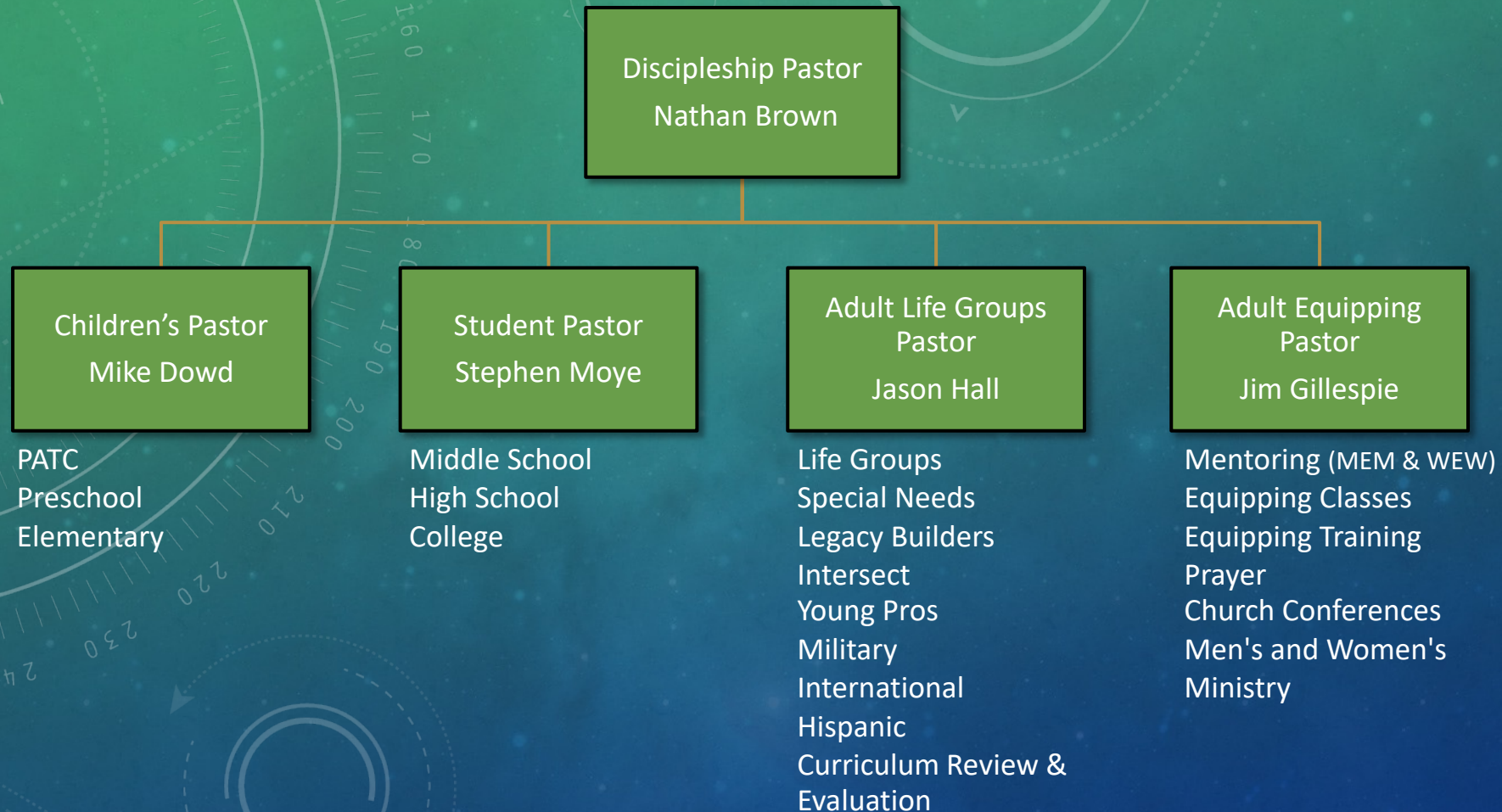
RCCC PHASE 0 Realignment – Summary

Total Phase 0 Paid Staff – 49:

- 33 Full-time (12 Pastors)
- 15 Part-time (1 Pastor)
- 1 Part-time Contractor



RCCC PHASE 0 Realignment – Discipleship Ministry



RCCC PHASE 0 Realignment – Connections and Member Care Ministry

Connections & Member
Care Pastor
Open

Pastoral Care (Hospital visits, Funerals,
Benevolence), Baptism, Biblical
Counseling, Lay Pastor & Deacon Assisted

Next Steps Pastor
Cameron Wagner

1st Time Guest Follow-up, 1st Impressions,
Decision Counseling, Member/Visitor
Database, Visitor and Member Connections
and Assimilation

Associate Connections
Pastor
John Nyota

Virtual and Member Connections and
Assimilation

Note: This area will be supported by Lay Pastors and Deacons

New Church Polity Review

Pastoral Body – The body is comprised of Staff (paid) and Lay Pastors – 13 Total as of June 8, 2021

Directional Team – This team is responsible to provide overall vision and direction for the church.

The Directional team is comprised of 7 pastors:

- Mike Powers - Vision and Preaching Pastor (by position)
- Tony Donato – Executive Pastor (by position)
- John Wright – Operations Pastor (by position)
- Nathan Brown – Discipleship Pastor (by position)
- David Satterwhite - Lay Pastor (nominated and voted on by the Pastoral Body)
- Scott Yawn - Lay Pastor (nominated and voted on by the Pastoral Body)
- Cameron Wagner - Staff Pastor (nominated and voted on by the Pastoral Body)

Executive Team – This team is responsible for the day-to-day operations and execution of ministries of the church.

The Executive team is currently comprised of:

- Tony Donato, John Wright, and Nathan Brown